



**ALASKA DIVISION OF HOMELAND SECURITY &
EMERGENCY MANAGEMENT**
SITUATION REPORT 24-093 • April 2, 2024



Toll-Free 1.800.478.2337

Anchorage Area 907.428.7000

SEOC 907.428.7100

<p><u>SEOC Preparedness Level</u> Level 1 – Routine Operations.</p>	<p align="center">http://ready.alaska.gov</p>	<p><u>National Terrorism Advisory System:</u> Read the NTAS Bulletin here</p>
<p><u>Maritime Security (MARSEC)</u> Level:1- Minimum Appropriate Security Measures</p>	<p>WHO Novel Coronavirus Pandemic (COVID-19): 2019 Novel Coronavirus</p>	<p><u>Alaska Military Installation Force Protection Level:</u> FPCON Bravo</p>

(Significant changes from previous situation reports are red.)

Significant Issues:

Bering Sea Severe Weather -

Yesterday, the National Weather Service Regional Operations Center (NWS ROC) contacted SEOC regarding a strong low-pressure system in the Bering Sea expected to make landfall today through Wednesday evening. NWS ROC provided storm system details and the expected trajectory for the system while also noting this system is not expected to be as strong as Typhoon Merbok but is still a strong system.

SEOC and National Weather Service Regional Office (NWS ROC) hosted an interagency conference call with communities from the Yukon Delta north to the Northwest Arctic Coast to allow for the weather service to brief each community directly. Regional partners, volunteer agencies and State agencies including DOT and DEC liaisons also attended the conference call. Blizzard Warnings and Winter Storm Warnings have been issued for coastal communities along the Yukon, Kuskokwim Delta, St. Lawrence Island, and the Seward Peninsula into Thursday.

State of Alaska Department of Health (DOH)

The DOH stands ready to assist with all aspects of public health and, in the event of a public health emergency, is supported by the SEOC and other state departments as required.

For current information, see: <https://health.alaska.gov/dph/Pages/default.aspx>

<https://health.alaska.gov/dph/Emergency/Pages/prepared/default.aspx>

NTAS Bulletin

The U.S. Department of Homeland Security issued an updated National Terrorism Advisory Bulletin on May 24, 2023. The current and expired bulletins can be viewed at the below link.

<https://www.dhs.gov/national-terrorism-advisory-system>

Travel Alerts and Conditions

For current driving conditions, dial 511 or visit: <https://511.alaska.gov/>

Barry Arm Landslide / Tsunami Risk

For the latest information on the Barry Arm Landslide and Tsunami risk, click here:

<https://dgggs.alaska.gov/hazards/barry-arm-landslide.html>

Earthquakes

United States Geological Service (USGS) Earthquake Information: <http://earthquake.usgs.gov/>

National Tsunami Warning Center: <http://tsunami.gov/>

Alaska Volcanoes

Great Sitkin Alert Level: Watch and Aviation Color Code: **Orange**

Shishaldin Alert Level: Advisory and Aviation Color Code: **Yellow**

Atka Volcanic Complex Alert Level: Advisory and Aviation Color Code: **Yellow**

For Alaska Volcano updates, go to: <https://www.avo.alaska.edu/>

Air Quality Index (AQI) Advisories

For the most up-to-date Air Quality Index Advisories:

<http://dec.alaska.gov/Applications/Air/airtoolsweb/Home/Index>

Spills of Oil and Hazardous Substances

The Alaska Division of Environmental Conservation (ADEC) Spill Prevention and Response page is located at:

<https://dec.alaska.gov/spar/>

Alaska Cyber Security Information

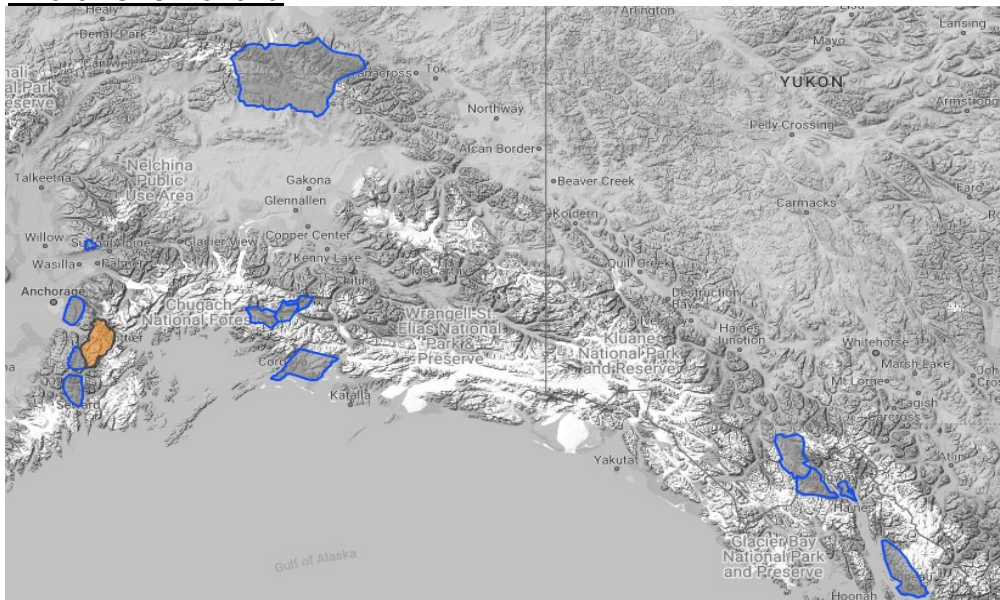
State Employees may sign up for cybersecurity notifications and alerts at

<https://oit.alaska.gov/security>

Cybersecurity and Infrastructure Security Agency (CISA)-Cybersecurity Services and Tools:

www.cisa.gov/free-cybersecurity-services-and-tools

Avalanche Hazard

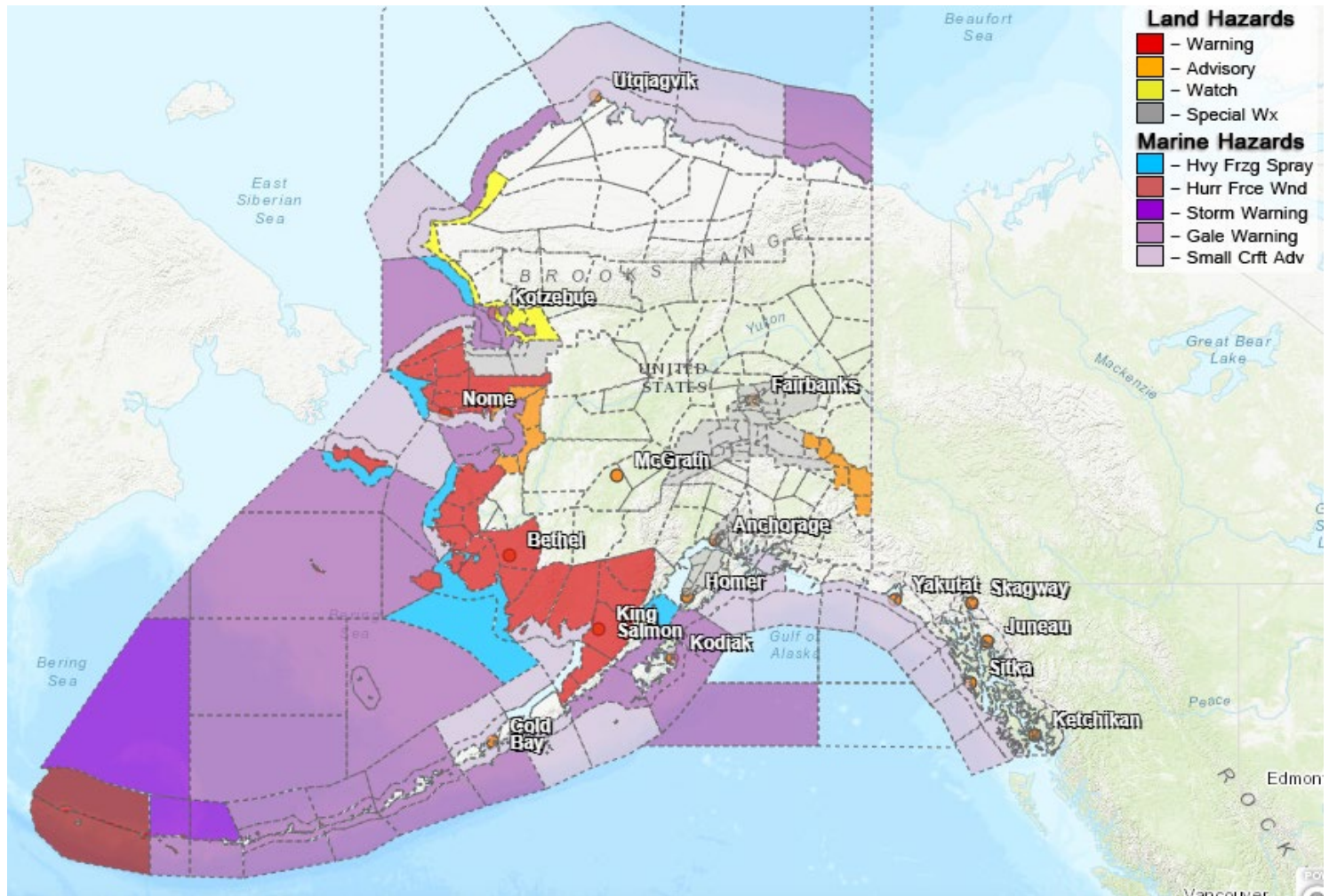


Travel in avalanche terrain is not recommended. Avoid being on or beneath all steep slopes.

Turnagain Pass- Considerable above 1000', Moderate below this

For information and the most current avalanche conditions, go to <https://alaskasnow.org>

Significant Weather:



Winter Storm Watch:

- Lower Kobuk Valley, Baldwin Peninsula-late tonight through Wednesday evening
- Kivalina and Red Dog Dock, Western Arctic Coast- until Thursday evening

High Wind Warning:

- Western Aleutians-until 3pm this afternoon

Special Weather Statement:

- Bering Strait Coast, Southern Seward Peninsula Coast, Eastern Norton Sound and Nulato Hills, Yukon Delta Coast, St Lawrence Island, Kivalina and Red Dog Dock, Lower Kobuk Valley, Baldwin Peninsula, Northern Seward Peninsula, Shishmaref-strong storm causing water to move onto near shore, Ice Wednesday
- Upper Tanana Valley, Delta Junction; Upper Chena River Valley, Tanana Flats, Eielson AFB and Salcha, Goldstream Valley and Nenana Hills, Chatanika River Valley, Two Rivers, Fairbanks Metro Area, Nenana, Northern Denali Borough, Southern Denali Borough, Eastern Alaska Range North of Trims Camp, Eastern Alaska Range South of Trims Camp-strong cold front and snow squalls expected across interior this evening through Tuesday
- Anchorage, Matanuska Valley, Western Kenai Peninsula-areas of moderate to heavy snow showers into Tuesday morning

Blizzard Warning:

- **Yukon Delta Coast, St Lawrence Island-** noon today until 4am Wednesday
- **Kuskokwim Delta-** 10am Tuesday until 1am Wednesday
- **Bristol Bay-** 4pm this afternoon until 1am Wednesday

Winter Storm Warning:

- **Bering Strait Coast, Shishmaref, Interior Seward Peninsula-** late tonight through Wednesday night

For more information and the most current weather, Watches / Warnings / Advisories go to:

<https://www.weather.gov/arh/>

The Next Situation Report will be **April 3, 2024**. A significant change in the situation or the threat level will prompt an interim report. This report is posted on the internet at <https://ready.alaska.gov/sitrep>.

To register for email distribution, go to <http://list.state.ak.us/mailman/listinfo/dhsem.situation.report>.

Direct questions regarding this report to the SEOC at 907-428-7100 or seoc@alaska.gov.